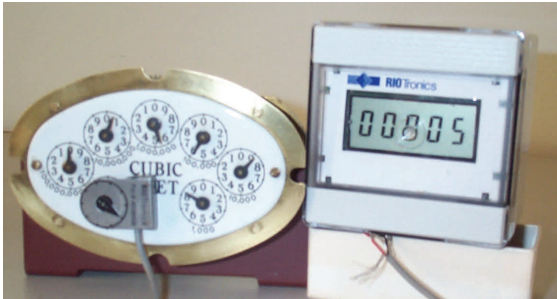


# Measurement Controls, Inc.

## TEST METERS

- **Standards: ANSI B109.1**
- **Since 60's**
- **Parts/meter connections**
- **Flow rates: From ½ LPM (1.1cuft)**
- **Accuracy: +/-0.5% (Also proved under various EPA methods)**
- **Calibration: Standard Bells traceable to N.I.S.T.**
- **W. Pressure: 0.1 - 0.5 in WC**
- **Connection: Either top or side**
- **Meter Size: From 110 to 425 Cfh**
- **Data logging**
- **Meter Management System**
- **Re-manufactured/repaired**
- **Timely delivery**



Measurement Controls, Inc.

**Proof...Precision...Performance**

6131 Old Concord Road  
Charlotte, NC (USA) 28213  
Tel: 001 (704) 921-1101  
Fax: 001 (704) 921-1010  
www.measurementcontrols.com  
sales@measurementcontrols.com

ISO 9001:2008



Certificate No. A-674



Certificate No.3660.01